

ARCHITECTURAL DRAWING SET

ISSUE DATE: JULY 2016

DRAWING NO - DRAWING TITLE

A000 - Cover Sheet
A001 - Site Location [C]
A002 - Site Photos [C]

14100-01 Site Survey 1 (by others)
14100-01 Site Survey 2 (by others)

A005 - Site Plan [C]
A006 - Site Analysis [C]
A007 - Setback Diagram [C]
A008 - Demolition Plan [C]
A009 - Streetscape Analysis [D]
A010 - Art Activation Diagram [C]
A011 - Hawthorne Canal [C]

FLOOR PLANS

A090 - Basement 2 Plan [C]
A091 - Basement 1 Plan [C]
A100 - Ground Floor Plan [D]
A101 - Level 1 Floor Plan [C]
A102 - Level 2 Floor Plan [C]
A103 - Level 3 Floor Plan [C]
A104 - Level 4 Floor Plan [C]
A105 - Level 5 Floor Plan [C]
A110 - Roof Plan [C]

A130 - Adaptable Units 1 [C]
A131 - Adaptable Units 2 [C]
A132 - Adaptable Units 3 [C]

ELEVATIONS

A200 - Building A East Elevation [D]
A201 - Building A West Elevation [D]
A202 - Building B East Elevation [D]
A203 - Building B West Elevation [D]
A204 - North Elevation [D]
A205 - South Elevation [D]

SECTIONS & DETAIL

A300 - Section A [D]
A301 - Section B [D]

A350 - Ramp Detail Section 1 [C]
A351 - Ramp Detail Section 2 [C]

A360 - Public & Private Interface [D]

DIAGRAMS & ANALYSIS

A380-A392 Architectural Expression Diagrams [C]

A400 - Communal Open Space [C]
A401 - Deep Soil Calculation [C]
A402 - Soft Landscape Calculation [C]
A410 - Site Coverage Diagram [C]

A420 - Construction Waste Management [C]
A421 - Ongoing Waste Management 1 [C]
A422 - Ongoing Waste Management 2 [C]

A450 - Art Kitchen Details [C]

A520 - Shadow Diagrams 1 [C]
A521 - Shadow Diagrams 2 [C]
A522 - Shadow Diagrams 3 [C]
A523 - Shadow Diagrams 4 [C]

A540-A545 Floor Plan Solar Analysis [C]

A550 - 3D Solar Analysis 1 [C]
A551 - 3D Solar Analysis 2 [C]
A560 - 3D Solar Analysis 3 [C]
A561 - 3D Solar Analysis 4 [C]
A562 - 3D Solar Analysis 5 [C]
A563 - 3D Solar Analysis 6 [C]
A564 - 3D Solar Analysis 7 [C]
A565 - 3D Solar Analysis 8 [C]

A610 - Natural Ventilation Diagram [C]

A700 - External Material Finishes [D]

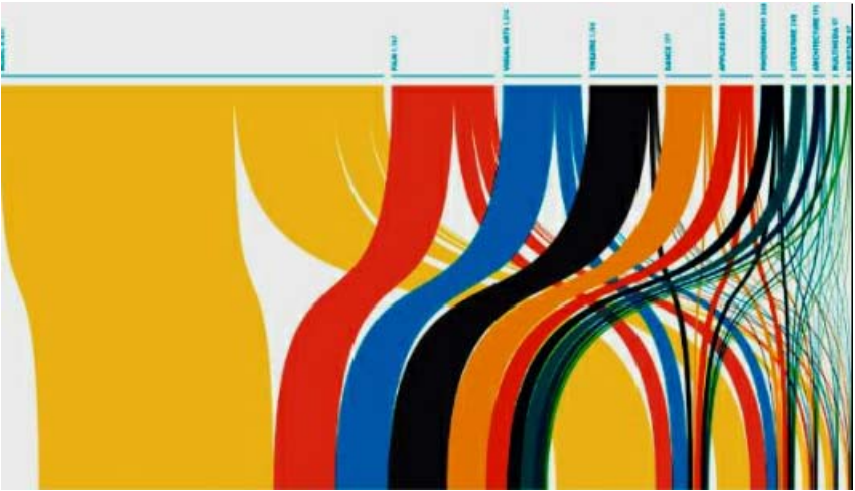
A800 - FSR Ground Floor [C]
A801 - FSR Level 1 [C]
A802 - FSR Level 2 [C]
A803 - FSR Level 3 [C]
A804 - FSR Level 4 [C]
A805 - FSR Level 5 [C]

PERSPECTIVES

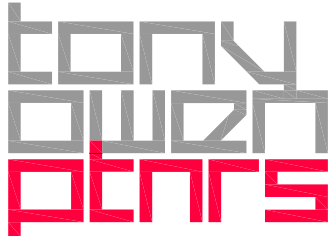
A900 - Perspective 1 [C]
A901 - Perspective 2 [C]
A902 - Perspective 3 [C]

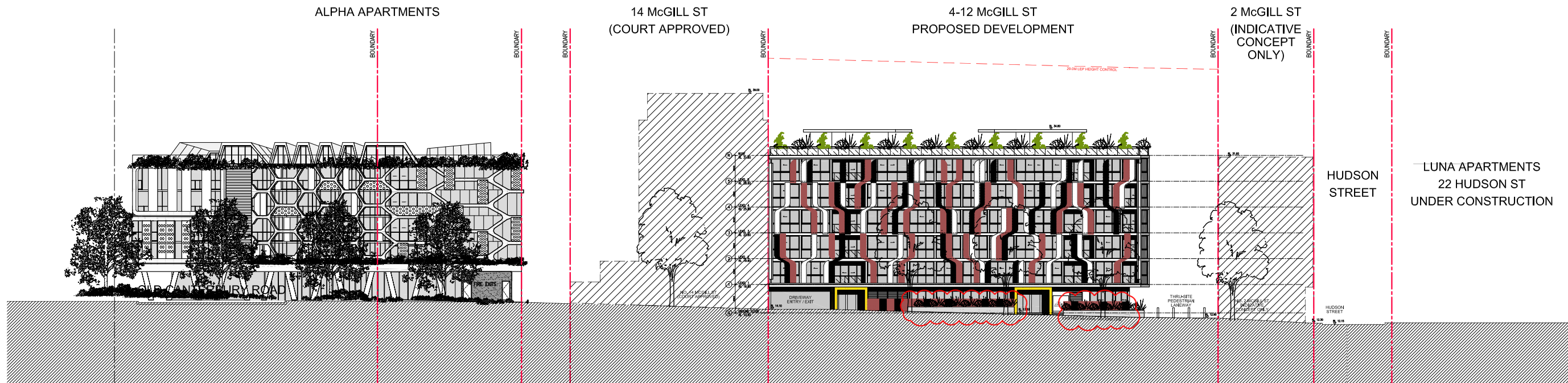
SCHEDULES

Schedule of Units
Area Schedule

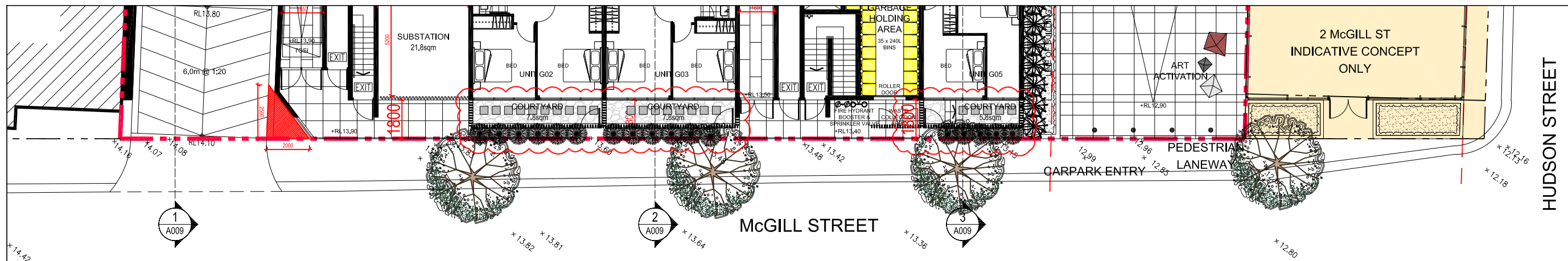


4 - 12 MCGILL ST, LEWISHAM
DEVELOPMENT APPLICATION

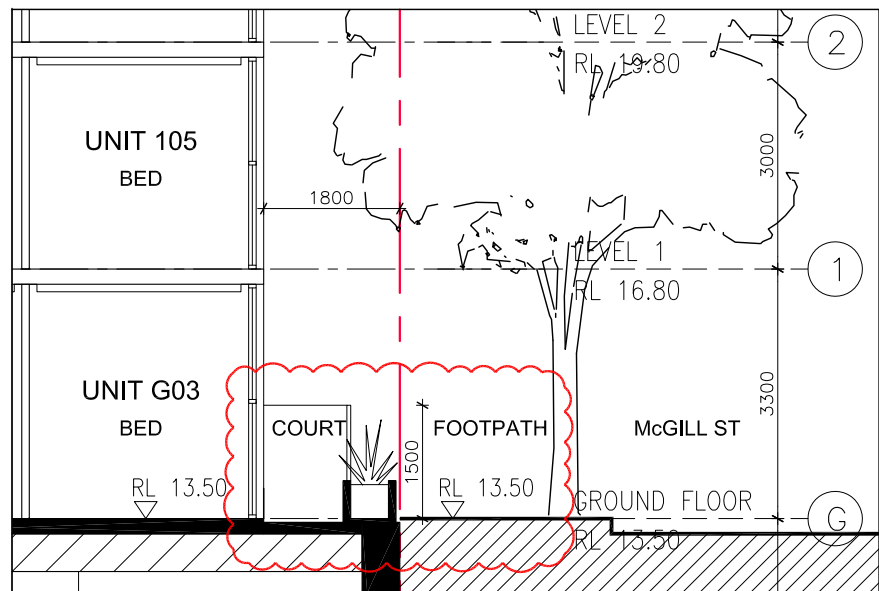




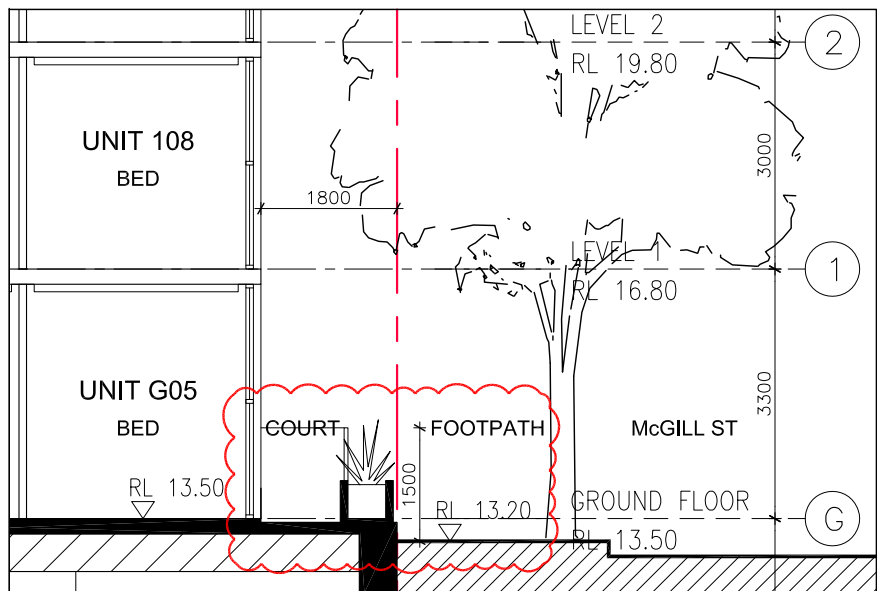
STREETSCAPE ELEVATION 1:500 @ A3



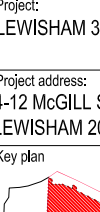
STREETSCAPE PLAN 1:200 @ A3

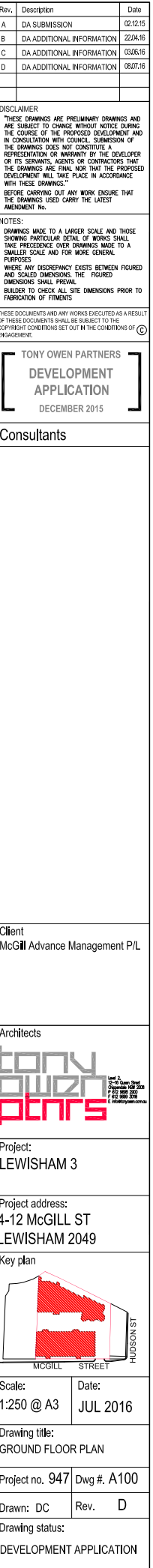


STREETSCAPE SECTION 1 1:100 @ A3



STREETSCAPE SECTION 2 1:100 @ A3

Rev.	Description	Date
A	DA SUBMISSION	02.12.15
B	DA ADDITIONAL INFORMATION	22.04.16
C	DA ADDITIONAL INFORMATION	03.06.16
D	DA ADDITIONAL INFORMATION	08.07.16
DISCLAIMER		
THESE DRAWINGS ARE PRELIMINARY DRAWINGS AND ARE SUBJECT TO CHANGE WITHOUT NOTICE DURING THE COURSE OF THE PROPOSED DEVELOPMENT AND IN CONSULTATION WITH COUNCIL. SUBMISSION OF THE DRAWINGS DOES NOT CONSTITUTE A REPRESENTATION OR WARRANTY BY THE DEVELOPER OR ITS SERVANTS, AGENTS OR CONTRACTORS THAT THE DRAWINGS ARE FINAL NOR THAT THE PROPOSED DEVELOPMENT WILL TAKE PLACE IN ACCORDANCE WITH THESE DRAWINGS.		
BEFORE CARRYING OUT ANY WORK ENSURE THAT THE DRAWINGS USED CARRY THE LATEST AMENDMENT No.		
NOTES:		
DRAWINGS MADE TO A LARGER SCALE AND THOSE SHOWING PARTICULAR DETAIL OF WORKS SHALL TAKE PRECEDENCE OVER DRAWINGS MADE TO A SMALLER SCALE AND FOR MORE GENERAL PURPOSES.		
WHERE ANY DISCREPANCY EXISTS BETWEEN FIGURED AND SCALED DIMENSIONS, THE FIGURED DIMENSIONS SHALL PREVAIL.		
BUILDER TO CHECK ALL SITE DIMENSIONS PRIOR TO FABRICATION OF FITMENTS.		
THESE DOCUMENTS AND ANY WORKS EXECUTED AS A RESULT OF THESE DOCUMENTS SHALL BE SUBJECT TO THE COPYRIGHT CONDITIONS SET OUT IN THE CONDITIONS OF ENGAGEMENT.		
TONY OWEN PARTNERS [DEVELOPMENT APPLICATION] DECEMBER 2015		
Consultants		
Client McGill Advance Management P/L		
Architects tony owen partners Unit 10, 11 & 12 4-12 McGill St Lewisham VIC 3203 P 03 9594 5555 F 03 9594 5556 E info@owenpartners.com.au		
Project: LEWISHAM 3		
Project address: 4-12 MCGILL ST LEWISHAM 2049		
Key plan 		
Scale:	Date: JUL 2016	
Drawing title: STREETSCAPE ANALYSIS		
Project no. 947	Dwg #. A009	
Drawn: DC	Rev. D	
Drawing status: DEVELOPMENT APPLICATION		



DISCLAIMER

"THESE DRAWINGS ARE PRELIMINARY DRAWINGS AND ARE SUBJECT TO CHANGE WITHOUT NOTICE DURING THE COURSE OF THE PROPOSED DEVELOPMENT AND IN CONSULTATION WITH COUNCIL. SUBMISSION OF THE DRAWINGS DOES NOT CONSTITUTE A REPRESENTATION OR WARRANTY BY THE DEVELOPER OR ITS SERVANTS, AGENTS OR CONTRACTORS THAT THE DRAWINGS ARE FINAL NOR THAT THE PROPOSED DEVELOPMENT WILL TAKE PLACE IN ACCORDANCE WITH THESE DRAWINGS."

BEFORE CARRYING OUT ANY WORK ENSURE THAT THE DRAWINGS USED CARRY THE LATEST AMENDMENT No.

THESE DOCUMENTS AND ANY WORKS EXECUTED AS A RESULT OF THESE DOCUMENTS SHALL BE SUBJECT TO THE COPYRIGHT CONDITIONS SET OUT IN THE CONDITIONS OF ENGAGEMENT. ©

Consultants	
-------------	--

Architects

**TONY
OWEN
Partners**

Level 2,
12-16 Queen Street
Opposite HSBC
P 412 9600 3822
F 412 9600 3378
E info@tonyowen.com.au

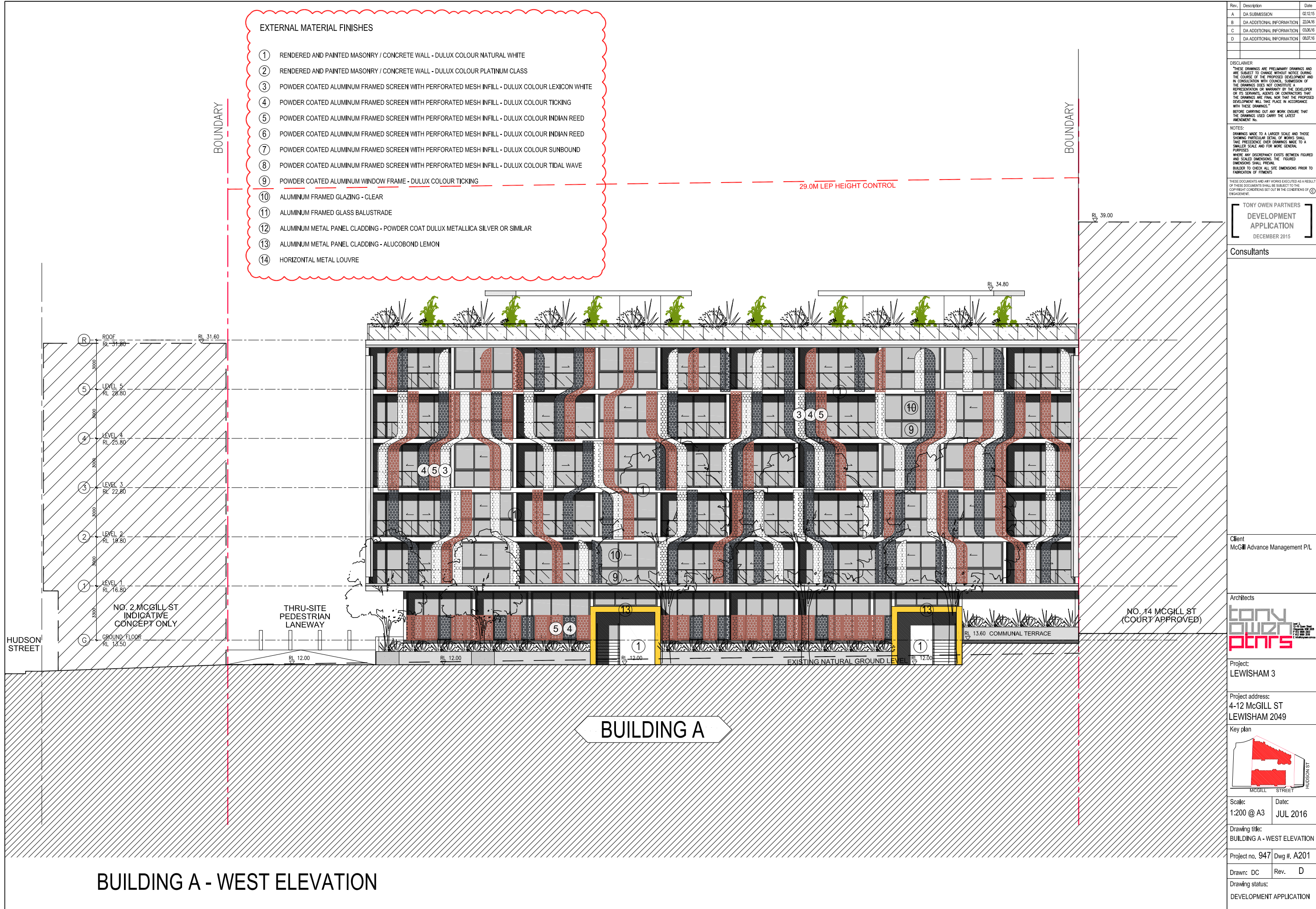
Drawing status:
DEVELOPMENT APPLICATION

- ① RENDERED AND PAINTED MASONRY / CONCRETE WALL - DULUX COLOUR NATURAL WHITE
- ② RENDERED AND PAINTED MASONRY / CONCRETE WALL - DULUX COLOUR PLATINUM CLASS
- ③ POWDER COATED ALUMINUM FRAMED SCREEN WITH PERFORATED MESH INFILL - DULUX COLOUR LEXICON WHITE
- ④ POWDER COATED ALUMINUM FRAMED SCREEN WITH PERFORATED MESH INFILL - DULUX COLOUR TICKING
- ⑤ POWDER COATED ALUMINUM FRAMED SCREEN WITH PERFORATED MESH INFILL - DULUX COLOUR INDIAN REED
- ⑥ POWDER COATED ALUMINUM FRAMED SCREEN WITH PERFORATED MESH INFILL - DULUX COLOUR INDIAN REED
- ⑦ POWDER COATED ALUMINUM FRAMED SCREEN WITH PERFORATED MESH INFILL - DULUX COLOUR SUNBOUND
- ⑧ POWDER COATED ALUMINUM FRAMED SCREEN WITH PERFORATED MESH INFILL - DULUX COLOUR TIDAL WAVE
- ⑨ POWDER COATED ALUMINUM WINDOW FRAME - DULUX COLOUR TICKING
- ⑩ ALUMINUM FRAMED GLAZING - CLEAR
- ⑪ ALUMINUM FRAMED GLASS BALUSTRADE
- ⑫ ALUMINUM METAL PANEL CLADDING - POWDER COAT DULUX METALLICA SILVER OR SIMILAR
- ⑬ ALUMINUM METAL PANEL CLADDING - ALUCOBOND LEMON
- ⑭ HORIZONTAL METAL LOUVRE



BUILDING A

BUILDING A - EAST ELEVATION



DISCLAIMER

"THESE DRAWINGS ARE PRELIMINARY DRAWINGS AND ARE SUBJECT TO CHANGE WITHOUT NOTICE DURING THE COURSE OF THE PROPOSED DEVELOPMENT AND IN CONSULTATION WITH COUNCIL. SUBMISSION OF THE DRAWINGS DOES NOT CONSTITUTE A REPRESENTATION OR WARRANTY BY THE DEVELOPER OR ITS SERVANTS, AGENTS OR CONTRACTORS THAT THE DRAWINGS ARE FINAL NOR THAT THE PROPOSED DEVELOPMENT WILL TAKE PLACE IN ACCORDANCE WITH THESE DRAWINGS."

BEFORE CARRYING OUT ANY WORK ENSURE THAT THE DRAWINGS USED CARRY THE LATEST AMENDMENT No.

THESE DOCUMENTS AND ANY WORKS EXECUTED AS A RESULT OF THESE DOCUMENTS SHALL BE SUBJECT TO THE COPYRIGHT CONDITIONS SET OUT IN THE CONDITIONS OF ENGAGEMENT. ©

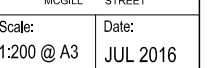
Consultants	
-------------	--

Architects

**TONY
OWEN
PARTNERS**

Level 2,
12-16 Queen Street
Opposite HSBC 228
P 412 9600 3822
F 412 9600 3378
E info@tonyowen.com.au

Key plan



Project no. 947	Dwg #. A202
-----------------	-------------

Drawn: DC	Rev. D
Drawing status:	
DEVELOPMENT APPLICATION	

- ① RENDERED AND PAINTED MASONRY / CONCRETE WALL - DULUX COLOUR NATURAL WHITE
- ② RENDERED AND PAINTED MASONRY / CONCRETE WALL - DULUX COLOUR PLATINUM CLASS
- ③ POWDER COATED ALUMINUM FRAMED SCREEN WITH PERFORATED MESH INFILL - DULUX COLOUR LEXICON WHITE
- ④ POWDER COATED ALUMINUM FRAMED SCREEN WITH PERFORATED MESH INFILL - DULUX COLOUR TICKING
- ⑤ POWDER COATED ALUMINUM FRAMED SCREEN WITH PERFORATED MESH INFILL - DULUX COLOUR INDIAN REED
- ⑥ POWDER COATED ALUMINUM FRAMED SCREEN WITH PERFORATED MESH INFILL - DULUX COLOUR INDIAN REED
- ⑦ POWDER COATED ALUMINUM FRAMED SCREEN WITH PERFORATED MESH INFILL - DULUX COLOUR SUNBOUND
- ⑧ POWDER COATED ALUMINUM FRAMED SCREEN WITH PERFORATED MESH INFILL - DULUX COLOUR TIDAL WAVE
- ⑨ POWDER COATED ALUMINUM WINDOW FRAME - DULUX COLOUR TICKING
- ⑩ ALUMINUM FRAMED GLAZING - CLEAR
- ⑪ ALUMINUM FRAMED GLASS BALUSTRADE
- ⑫ ALUMINUM METAL PANEL CLADDING - POWDER COAT DULUX METALLICA SILVER OR SIMILAR
- ⑬ ALUMINUM METAL PANEL CLADDING - ALUCOBOND LEMON
- ⑭ HORIZONTAL METAL LOUVRE

29.0M LEP HEIGHT CONTROL

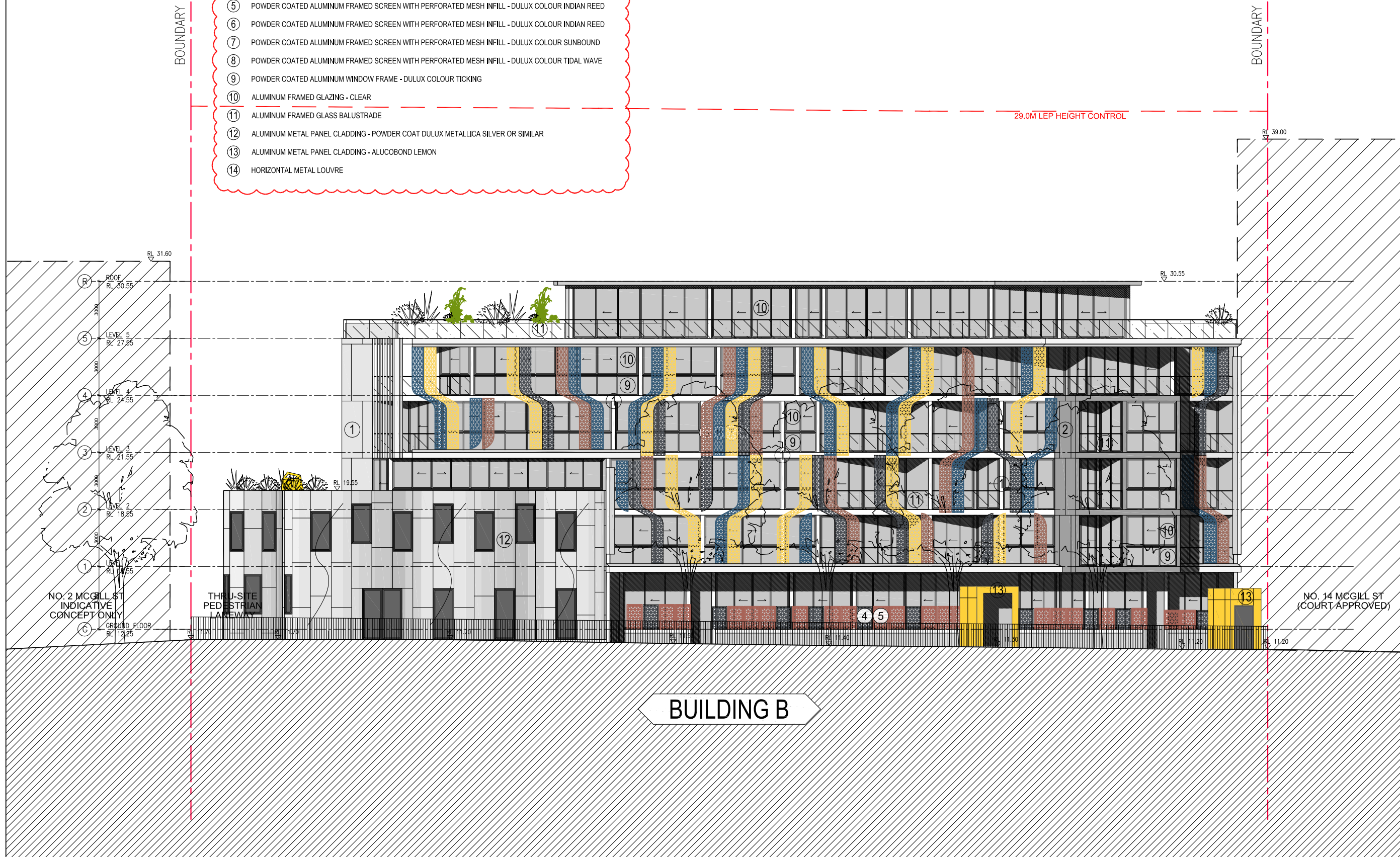


BUILDING B

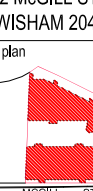
BUILDING B - EAST ELEVATION

EXTERNAL MATERIAL FINISHES

- 1 RENDERED AND PAINTED MASONRY / CONCRETE WALL - DULUX COLOUR NATURAL WHITE
- 2 RENDERED AND PAINTED MASONRY / CONCRETE WALL - DULUX COLOUR PLATINUM CLASS
- 3 POWDER COATED ALUMINUM FRAMED SCREEN WITH PERFORATED MESH INFILL - DULUX COLOUR LEXICON WHITE
- 4 POWDER COATED ALUMINUM FRAMED SCREEN WITH PERFORATED MESH INFILL - DULUX COLOUR TICKING
- 5 POWDER COATED ALUMINUM FRAMED SCREEN WITH PERFORATED MESH INFILL - DULUX COLOUR INDIAN REED
- 6 POWDER COATED ALUMINUM FRAMED SCREEN WITH PERFORATED MESH INFILL - DULUX COLOUR INDIAN REED
- 7 POWDER COATED ALUMINUM FRAMED SCREEN WITH PERFORATED MESH INFILL - DULUX COLOUR SUNBOUND
- 8 POWDER COATED ALUMINUM FRAMED SCREEN WITH PERFORATED MESH INFILL - DULUX COLOUR TIDAL WAVE
- 9 POWDER COATED ALUMINUM WINDOW FRAME - DULUX COLOUR TICKING
- 10 ALUMINUM FRAMED GLAZING - CLEAR
- 11 ALUMINUM FRAMED GLASS BALUSTRADE
- 12 ALUMINUM METAL PANEL CLADDING - POWDER COAT DULUX METALLICA SILVER OR SIMILAR
- 13 ALUMINUM METAL PANEL CLADDING - ALUCOBOND LEMON
- 14 HORIZONTAL METAL LOUVRE



BUILDING B WEST ELEVATION

Rev.	Description	Date
A	DA SUBMISSION	02.12.15
B	DA ADDITIONAL INFORMATION	22.04.16
C	DA ADDITIONAL INFORMATION	03.06.16
D	DA ADDITIONAL INFORMATION	08.07.16
DISCLAIMER		
THESE DRAWINGS ARE PRELIMINARY DRAWINGS AND ARE SUBJECT TO CHANGE WITHOUT NOTICE DURING THE COURSE OF THE PROPOSED DEVELOPMENT AND IN CONSULTATION WITH COUNCIL. SUBMISSION OF THE DRAWINGS DOES NOT CONSTITUTE A REPRESENTATION OR WARRANTY BY THE DEVELOPER OR ITS SERVANTS, AGENTS OR CONTRACTORS THAT THE DRAWINGS ARE FINAL NOR THAT THE PROPOSED DEVELOPMENT WILL TAKE PLACE IN ACCORDANCE WITH THESE DRAWINGS.		
BEFORE CARRYING OUT ANY WORK ENSURE THAT THE DRAWINGS USED CARRY THE LATEST AMENDMENT No.		
NOTES:		
DRAWINGS MADE TO A LARGER SCALE AND THOSE SHOWING PARTICULAR DETAIL OF WORKS SHALL TAKE PRECEDENCE OVER DRAWINGS MADE TO A SMALLER SCALE AND FOR MORE GENERAL PURPOSES.		
WHERE ANY DISCREPANCY EXISTS BETWEEN FIGURED AND SCALED DIMENSIONS, THE FIGURED DIMENSIONS SHALL PREVAIL.		
BUILDER TO CHECK ALL SITE DIMENSIONS PRIOR TO FABRICATION OF FITMENTS.		
THESE DOCUMENTS AND ANY WORKS EXECUTED AS A RESULT OF THESE DOCUMENTS SHALL BE SUBJECT TO THE COPYRIGHT CONDITIONS SET OUT IN THE CONDITIONS OF ENGAGEMENT.		
TONY OWEN PARTNERS [DEVELOPMENT APPLICATION] DECEMBER 2015		
Consultants		
Client McGill Advance Management P/L		
Architects tony owen partners Level 4, 140-142 Dandenong Rd Melbourne VIC 3181 P 03 9594 3770 F 03 9594 3771 E info@tonyowenpartners.com.au		
Project: LEWISHAM 3		
Project address: 4-12 MCGILL ST LEWISHAM 2049		
Key plan 		
Scale: 1:200 @ A3	Date: JUL 2016	
Drawing title: BUILDING B WEST ELEVATION		
Project no. 947	Dwg #. A203	
Drawn: DC	Rev. D	
Drawing status: DEVELOPMENT APPLICATION		

THESE DRAWINGS ARE PRELIMINARY DRAWINGS AND ARE SUBJECT TO CHANGE WITHOUT NOTICE DURING THE COURSE OF THE PROPOSED DEVELOPMENT AND IN CONSULTATION WITH COUNCIL. SUBMISSION OF THE DRAWINGS DOES NOT CONSTITUTE A REPRESENTATION OR WARRANTY BY THE DEVELOPER OR ITS SERVANTS, AGENTS OR CONTRACTORS THAT THE DRAWINGS ARE FINAL NOR THAT THE PROPOSED DEVELOPMENT WILL TAKE PLACE IN ACCORDANCE WITH THESE DRAWINGS."

BEFORE CARRYING OUT ANY WORK ENSURE THAT THE DRAWINGS USED CARRY THE LATEST AMENDMENT NO.

NOTES:

DRAWINGS MADE TO A LARGER SCALE AND THOSE SHOWING PARTICULAR DETAIL OF WORKS SHALL TAKE PRECEDENCE OVER DRAWINGS MADE TO A SMALLER SCALE AND FOR MORE GENERAL PURPOSES

WHERE ANY DISCREPANCY EXISTS BETWEEN FIGURED AND SCALED DIMENSIONS, THE FIGURED DIMENSIONS SHALL PREVAIL

BUILDER TO CHECK ALL SITE DIMENSIONS PRIOR TO FABRICATION OF FITMENTS

THESE DOCUMENTS AND ANY WORKS EXECUTED AS A RESULT OF THESE DOCUMENTS SHALL BE SUBJECT TO THE COPYRIGHT CONDITIONS SET OUT IN THE CONDITIONS OF ENGAGEMENT. ©

TONY OWEN PARTNERS
DEVELOPMENT
APPLICATION
DECEMBER 2015

Consultants	
-------------	--

Client	McGill Advance Management P/L
--------	-------------------------------

Architects

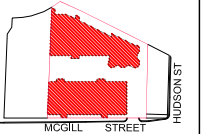
CONY
OWEN
OTNRS

Level 2,
12-16 Queen Street
Opposite RMB 228
P 412 8608 3812
F 412 8608 3376
E info@ryen.com.au

Project:
LEWISHAM 3

Project address:
4-12 MCGILL ST
LEWISHAM 2049

Key plan



Scale: 1:200 @ A3	Date: JUL 2016
----------------------	-------------------

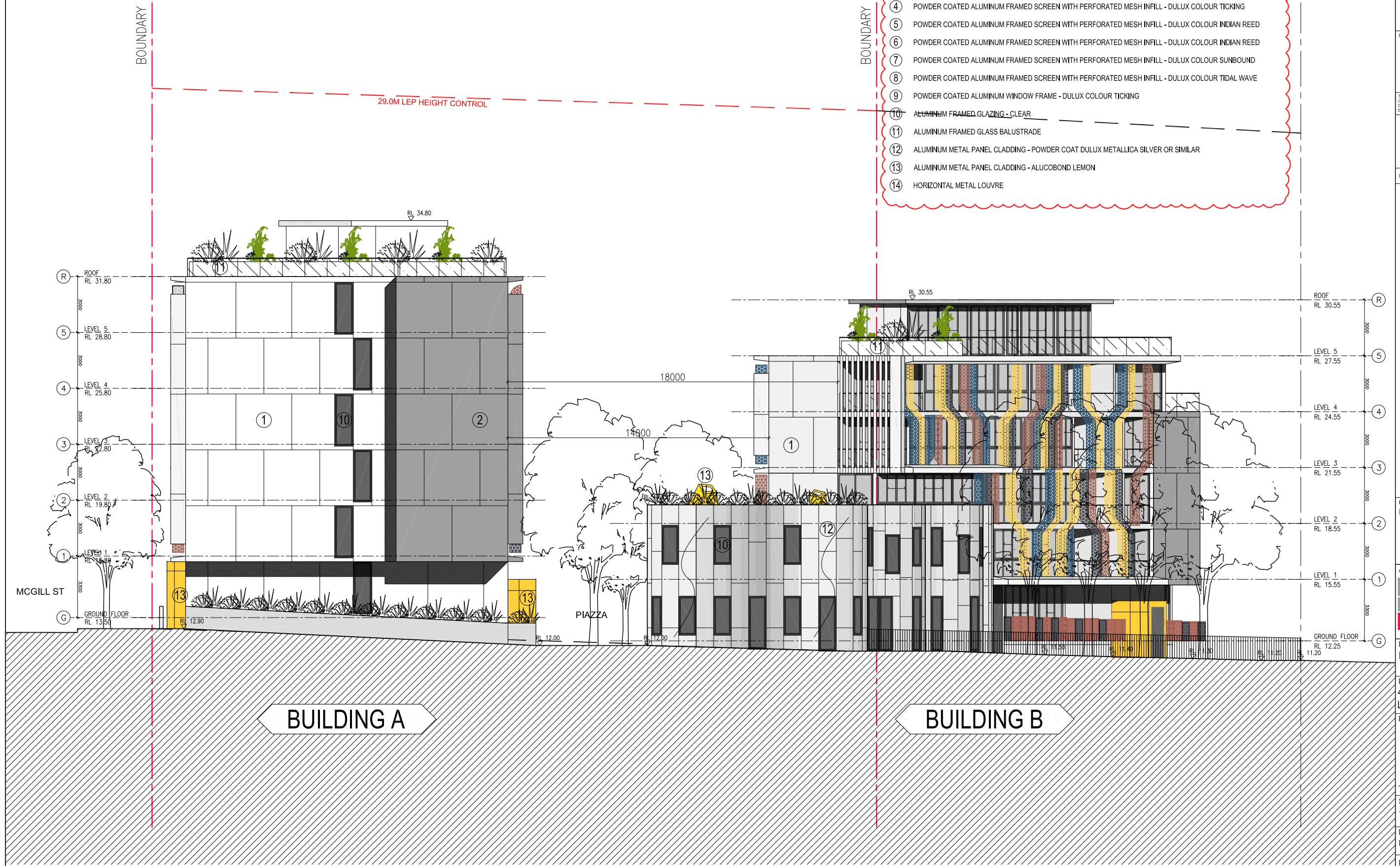
Drawing title:
NORTH ELEVATION

Project no. 947	Dwg #. A204
-----------------	-------------

Drawn: DC	Rev. D
-----------	--------

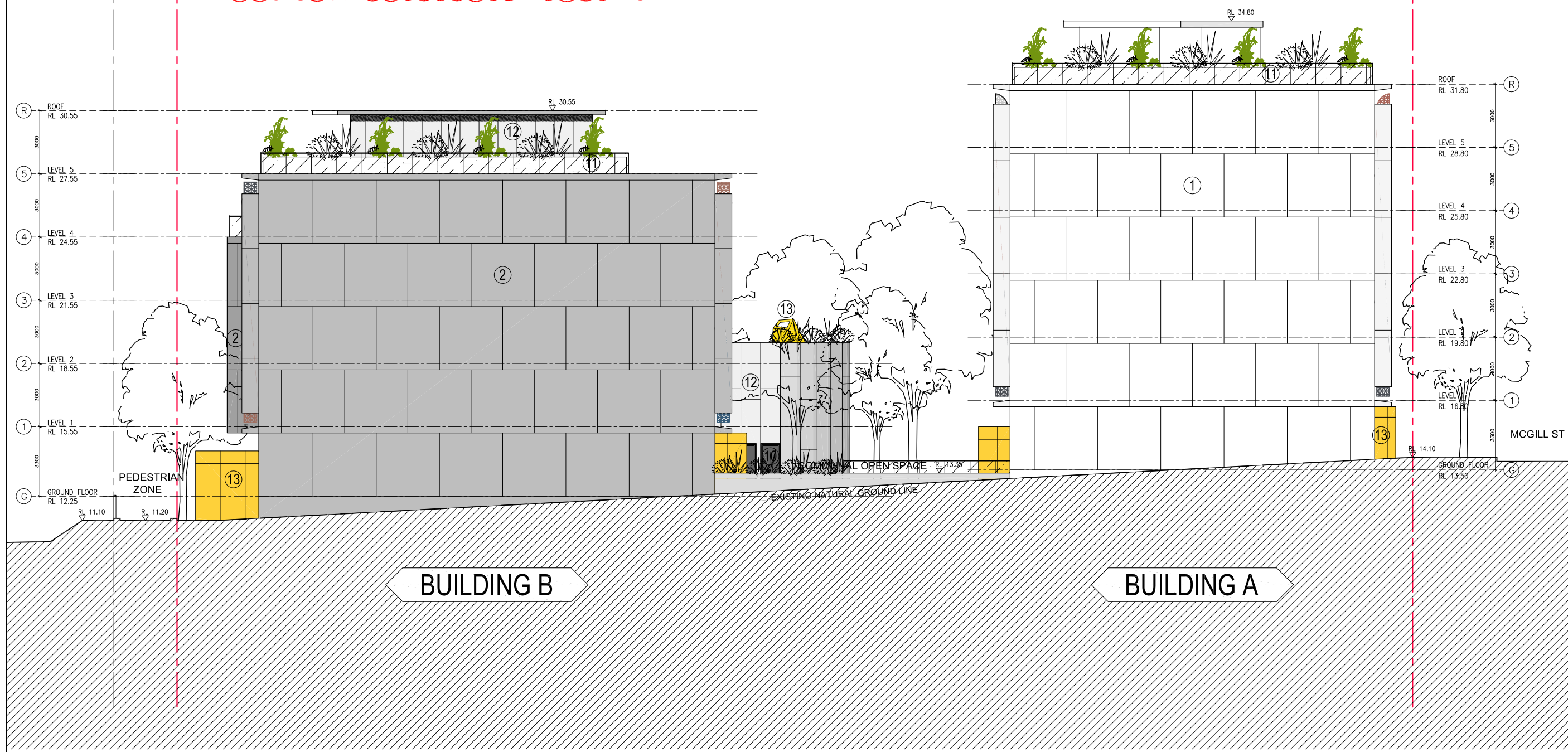
Drawing status:
DEVELOPMENT APPLICATION

- ① RENDERED AND PAINTED MASONRY / CONCRETE WALL - DULUX COLOUR NATURAL WHITE
- ② RENDERED AND PAINTED MASONRY / CONCRETE WALL - DULUX COLOUR PLATINUM CLASS
- ③ POWDER COATED ALUMINUM FRAMED SCREEN WITH PERFORATED MESH INFILL - DULUX COLOUR LEXICON WHITE
- ④ POWDER COATED ALUMINUM FRAMED SCREEN WITH PERFORATED MESH INFILL - DULUX COLOUR TICKING
- ⑤ POWDER COATED ALUMINUM FRAMED SCREEN WITH PERFORATED MESH INFILL - DULUX COLOUR INDIAN REED
- ⑥ POWDER COATED ALUMINUM FRAMED SCREEN WITH PERFORATED MESH INFILL - DULUX COLOUR INDIAN REED
- ⑦ POWDER COATED ALUMINUM FRAMED SCREEN WITH PERFORATED MESH INFILL - DULUX COLOUR SUNBOUND
- ⑧ POWDER COATED ALUMINUM FRAMED SCREEN WITH PERFORATED MESH INFILL - DULUX COLOUR TIDAL WAVE
- ⑨ POWDER COATED ALUMINUM WINDOW FRAME - DULUX COLOUR TICKING
- ⑩ ~~ALUMINUM FRAMED GLAZING - CLEAR~~
- ⑪ ALUMINUM FRAMED GLASS BALUSTRADE
- ⑫ ALUMINUM METAL PANEL CLADDING - POWDER COAT DULUX METALLICA SILVER OR SIMILAR
- ⑬ ALUMINUM METAL PANEL CLADDING - ALUCOBOND LEMON
- ⑭ HORIZONTAL METAL LOUVER



NORTH ELEVATION

- EXTERNAL MATERIAL FINISHES
- ① RENDERED AND PAINTED MASONRY / CONCRETE WALL - DULUX COLOUR NATURAL WHITE
 - ② RENDERED AND PAINTED MASONRY / CONCRETE WALL - DULUX COLOUR PLATINUM CLASS
 - ③ POWDER COATED ALUMINUM FRAMED SCREEN WITH PERFORATED MESH INFILL - DULUX COLOUR LEXICON WHITE
 - ④ POWDER COATED ALUMINUM FRAMED SCREEN WITH PERFORATED MESH INFILL - DULUX COLOUR TICKING
 - ⑤ POWDER COATED ALUMINUM FRAMED SCREEN WITH PERFORATED MESH INFILL - DULUX COLOUR INDIAN REED
 - ⑥ POWDER COATED ALUMINUM FRAMED SCREEN WITH PERFORATED MESH INFILL - DULUX COLOUR INDIAN REED
 - ⑦ POWDER COATED ALUMINUM FRAMED SCREEN WITH PERFORATED MESH INFILL - DULUX COLOUR SUNBOUND
 - ⑧ POWDER COATED ALUMINUM FRAMED SCREEN WITH PERFORATED MESH INFILL - DULUX COLOUR TIDAL WAVE
 - ⑨ POWDER COATED ALUMINUM WINDOW FRAME - DULUX COLOUR TICKING
 - ⑩ ALUMINUM FRAMED GLAZING - CLEAR
 - ⑪ ALUMINUM FRAMED GLASS BALUSTRADE
 - ⑫ ALUMINUM METAL PANEL CLADDING - POWDER COAT DULUX METALLICA SILVER OR SIMILAR
 - ⑬ ALUMINUM METAL PANEL CLADDING - ALUCOBOND LEMON
 - ⑭ HORIZONTAL METAL LOUVRE



Rev.	Description	Date
A	DA SUBMISSION	02.12.15
B	DA ADDITIONAL INFORMATION	22.04.16
C	DA ADDITIONAL INFORMATION	03.06.16
D	DA ADDITIONAL INFORMATION	08.07.16

DISCLAIMER

THESE DRAWINGS ARE PRELIMINARY DRAWINGS AND ARE SUBJECT TO CHANGE WITHOUT NOTICE DURING THE COURSE OF THE PROPOSED DEVELOPMENT AND IN CONSULTATION WITH COUNCIL. SUBMISSION OF THE DRAWINGS DOES NOT CONSTITUTE A REPRESENTATION OR WARRANTY BY THE DEVELOPER OR ITS SERVANTS, AGENTS OR CONTRACTORS THAT THE DRAWINGS ARE FINAL NOR THAT THE PROPOSED DEVELOPMENT WILL TAKE PLACE IN ACCORDANCE WITH THESE DRAWINGS.

BEFORE CARRYING OUT ANY WORK ENSURE THAT THE DRAWINGS USED CARRY THE LATEST AMENDMENT No.

NOTES:

DRAWINGS MADE TO A LARGER SCALE AND THOSE SHOWING PARTICULAR DETAIL OF WORKS SHALL TAKE PRECEDENCE OVER DRAWINGS MADE TO A SMALLER SCALE AND FOR MORE GENERAL PURPOSES.

WHERE ANY DISCREPANCY EXISTS BETWEEN FIGURED AND SCALED DIMENSIONS, THE FIGURED DIMENSIONS SHALL PREVAIL.

BUILDER TO CHECK ALL SITE DIMENSIONS PRIOR TO FABRICATION OF FITMENTS.

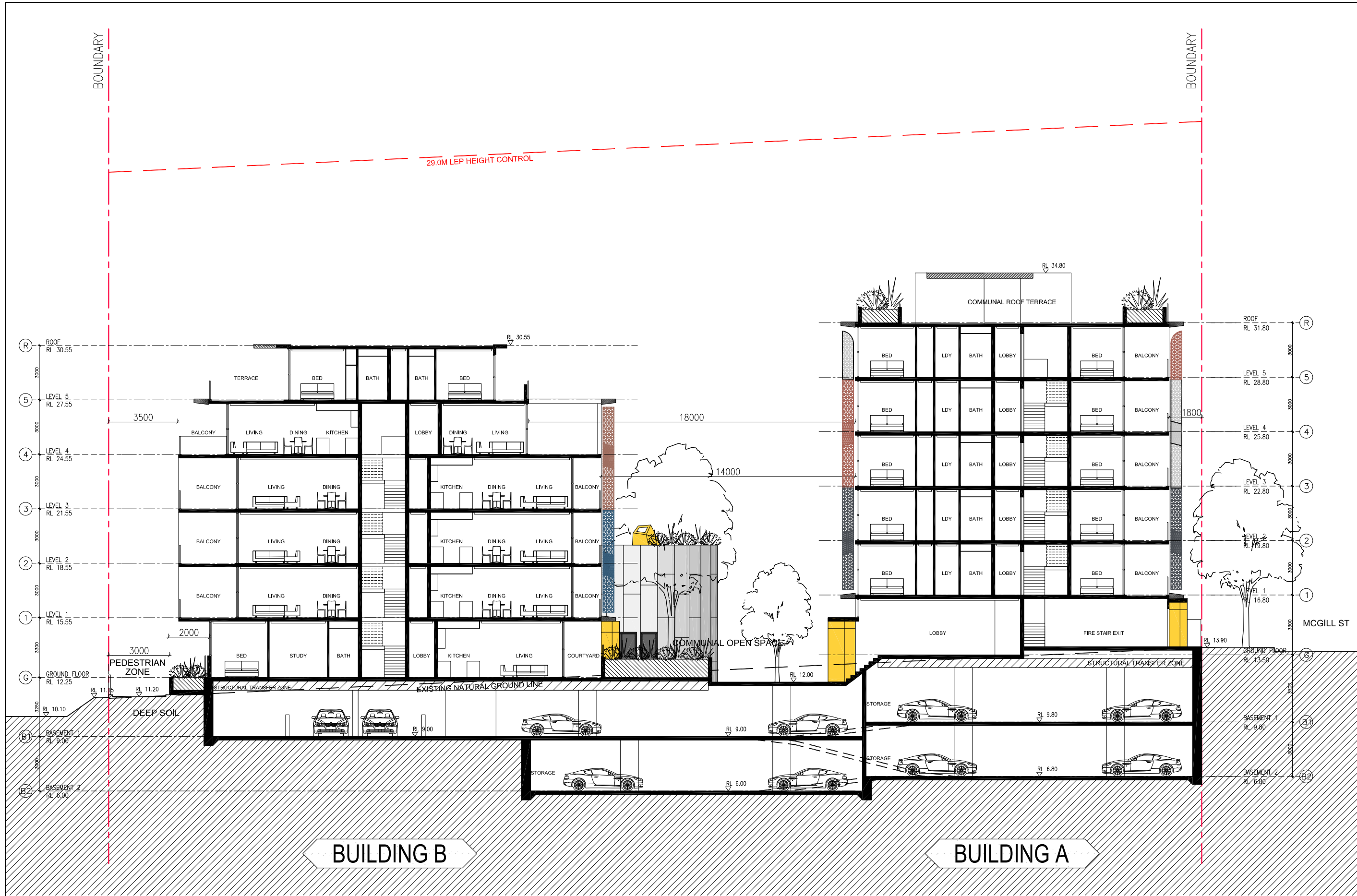
THESE DOCUMENTS AND ANY WORKS EXECUTED AS A RESULT OF THESE DOCUMENTS SHALL BE SUBJECT TO THE COPYRIGHT CONDITIONS SET OUT IN THE CONDITIONS OF ENGAGEMENT.

TONY OWEN PARTNERS
DEVELOPMENT
APPLICATION
DECEMBER 2015

Consultants

Client
McGill Advance Management P/L

Architects
tony owen partners
Unit 1, 100-102, 104, 106, 108, 110, 112, 114, 116, 118, 120, 122, 124, 126, 128, 130, 132, 134, 136, 138, 140, 142, 144, 146, 148, 150, 152, 154, 156, 158, 160, 162, 164, 166, 168, 170, 172, 174, 176, 178, 180, 182, 184, 186, 188, 190, 192, 194, 196, 198, 200, 202, 204, 206, 208, 210, 212, 214, 216, 218, 220, 222, 224, 226, 228, 230, 232, 234, 236, 238, 240, 242, 244, 246, 248, 250, 252, 254, 256, 258, 260, 262, 264, 266, 268, 270, 272, 274, 276, 278, 280, 282, 284, 286, 288, 290, 292, 294, 296, 298, 300, 302, 304, 306, 308, 310, 312, 314, 316, 318, 320, 322, 324, 326, 328, 330, 332, 334, 336, 338, 340, 342, 344, 346, 348, 350, 352, 354, 356, 358, 360, 362, 364, 366, 368, 370, 372, 374, 376, 378, 380, 382, 384, 386, 388, 390, 392, 394, 396, 398, 400, 402, 404, 406, 408, 410, 412, 414, 416, 418, 420, 422, 424, 426, 428, 430, 432, 434, 436, 438, 440, 442, 444, 446, 448, 450, 452, 454, 456, 458, 460, 462, 464, 466, 468, 470, 472, 474, 476, 478, 480, 482, 484, 486, 488, 490, 492, 494, 496, 498, 500, 502, 504, 506, 508, 510, 512, 514, 516, 518, 520, 522, 524, 526, 528, 530, 532, 534, 536, 538, 540, 542, 544, 546, 548, 550, 552, 554, 556, 558, 560, 562, 564, 566, 568, 570, 572, 574, 576, 578, 580, 582, 584, 586, 588, 590, 592, 594, 596, 598, 600, 602, 604, 606, 608, 610, 612, 614, 616, 618, 620, 622, 624, 626, 628, 630, 632, 634, 636, 638, 640, 642, 644, 646, 648, 650, 652, 654, 656, 658, 660, 662, 664, 666, 668, 670, 672, 674, 676, 678, 680, 682, 684, 686, 688, 690, 692, 694, 696, 698, 700, 702, 704, 706, 708, 710, 712, 714, 716, 718, 720, 722, 724, 726, 728, 730, 732, 734, 736, 738, 740, 742, 744, 746, 748, 750, 752, 754, 756, 758, 760, 762, 764, 766, 768, 770, 772, 774, 776, 778, 780, 782, 784, 786, 788, 790, 792, 794, 796, 798, 800, 802, 804, 806, 808, 810, 812, 814, 816, 818, 820, 822, 824, 826, 828, 830, 832, 834, 836, 838, 840, 842, 844, 846, 848, 850, 852, 854, 856, 858, 860, 862, 864, 866, 868, 870, 872, 874, 876, 878, 880, 882, 884, 886, 888, 890, 892, 894, 896, 898, 900, 902, 904, 906, 908, 910, 912, 914, 916, 918, 920, 922, 924, 926, 928, 930, 932, 934, 936, 938, 940, 942, 944, 946, 948, 950, 952, 954, 956, 958, 960, 962, 964, 966, 968, 970, 972, 974, 976, 978, 980, 982, 984, 986, 988, 990, 992, 994, 996, 998, 1000, 1002, 1004, 1006, 1008, 1010, 1012, 1014, 1016, 1018, 1020, 1022, 1024, 1026, 1028, 1030, 1032, 1034, 1036, 1038, 1040, 1042, 1044, 1046, 1048, 1050, 1052, 1054, 1056, 1058, 1060, 1062, 1064, 1066, 1068, 1070, 1072, 1074, 1076, 1078, 1080, 1082, 1084, 1086, 1088, 1090, 1092, 1094, 1096, 1098, 1100, 1102, 1104, 1106, 1108, 1110, 1112, 1114, 1116, 1118, 1120, 1122, 1124, 1126, 1128, 1130, 1132, 1134, 1136, 1138, 1140, 1142, 1144, 1146, 1148, 1150, 1152, 1154, 1156, 1158, 1160, 1162, 1164, 1166, 1168, 1170, 1172, 1174, 1176, 1178, 1180, 1182, 1184, 1186, 1188, 1190, 1192, 1194, 1196, 1198, 1200, 1202, 1204, 1206, 1208, 1210, 1212, 1214, 1216, 1218, 1220, 1222, 1224, 1226, 1228, 1230, 1232, 1234, 1236, 1238, 1240, 1242, 1244, 1246, 1248, 1250, 1252, 1254, 1256, 1258, 1260, 1262, 1264, 1266, 1268, 1270, 1272, 1274, 1276, 1278, 1280, 1282, 1284, 1286, 1288, 1290, 1292, 1294, 1296, 1298, 1300, 1302, 1304, 1306, 1308, 1310, 1312, 1314, 1316, 1318, 1320, 1322, 1324, 1326, 1328, 1330, 1332, 1334, 1336, 1338, 1340, 1342, 1344, 1346, 1348, 1350, 1352, 1354, 1356, 1358, 1360, 1362, 1364, 1366, 1368, 1370, 1372, 1374, 1376, 1378, 1380, 1382, 1384, 1386, 1388, 1390, 1392, 1394, 1396, 1398, 1400, 1402, 1404, 1406, 1408, 1410, 1412, 1414, 1416, 1418, 1420, 1422, 1424, 1426, 1428, 1430, 1432, 1434, 1436, 1438, 1440, 1442, 1444, 1446, 1448, 1450, 1452, 1454, 1456, 1458, 1460, 1462, 1464, 1466, 1468, 1470, 1472, 1474, 1476, 1478, 1480, 1482, 1484, 1486, 1488, 1490, 1492, 1494, 1496, 1498, 1500, 1502, 1504, 1506, 1508, 1510, 1512, 1514, 1516, 1518, 1520, 1522, 1524, 1526, 1528, 1530, 1532, 1534, 1536, 1538, 1540, 1542, 1544, 1546, 1548, 1550, 1552, 1554, 1556, 1558, 1560, 1562, 1564, 1566, 1568, 1570, 1572, 1574, 1576, 1578, 1580, 1582, 1584, 1586, 1588, 1590, 1592, 1594, 1596, 1598, 1600, 1602, 1604, 1606, 1608, 1610, 1612, 1614, 1616, 1618, 1620, 1622, 1624, 1626, 1628, 1630, 1632, 1634, 1636, 1638, 1640, 1642, 1644, 1646, 1648, 1650, 1652, 1654, 1656, 1658, 1660, 1662, 1664, 1666, 1668, 1670, 1672, 1674, 1676, 1678, 1680, 1682, 1684, 1686, 1688, 1690, 1692, 1694, 1696, 1698, 1700, 1702, 1704, 1706, 1708, 1710, 1712, 1714, 1716, 1718, 1720, 1722, 1724, 1726, 1728, 1730, 1732, 1734, 1736, 1738, 1740, 1742, 1744, 1746, 1748, 1750, 1752, 1754, 1756, 1758, 1760, 1762, 1764, 1766, 1768, 1770, 1772, 1774, 1776, 1778, 1780, 1782, 1784, 1786, 1788, 1790, 1792, 1794, 1796, 1798, 1800, 1802, 1804, 1806, 1808, 1810, 1812, 1814, 1816, 1818, 1820, 1822, 1824, 1826, 1828, 1830, 1832, 1834, 1836, 1838, 1840, 1842, 1844, 1846, 1848, 1850, 1852, 1854, 1856, 1858, 1860, 1862, 1864, 1866, 1868, 1870, 1872, 1874, 1876, 1878, 1880, 1882, 1884, 1886, 1888, 1890, 1892, 1894, 1896, 1898, 1900, 1902, 1904, 1906, 1908, 1910, 1912, 1914, 1916, 1918, 1920, 1922, 1924, 1926, 1928, 1930, 1932, 1934, 1936, 1938, 1940, 1942, 1944, 1946, 1948, 1950, 1952, 1954, 1956, 1958, 1960, 1962, 1964, 1966, 1968, 1970, 1972, 1974, 1976, 1978, 1980, 1982, 1984, 1986, 1988, 1990, 1992, 1994, 1996, 1998, 2000, 2002, 2004, 2006, 2008, 2010, 2012, 2014, 2016, 2018, 2020, 2022, 2024, 2026, 2028, 2030, 2032, 2034, 2036, 2038, 2040, 2042, 2044, 2046, 2048, 2050, 2052, 2054, 2056, 2058, 2060, 2062, 2064, 2066, 2068, 2070, 2072, 2074, 2076, 2078, 2080, 2082, 2084, 2086, 2088, 2090, 2092, 2094, 2096, 2098, 2100, 2102, 2104, 2106, 2108, 2110, 2112, 2114, 2116, 2118, 2120, 2122, 2124, 2126, 2128, 2130, 2132, 2134, 2136, 2138, 2140, 2142, 2144, 2146, 2148, 2150, 2152, 2154, 2156, 2158, 2160, 2162, 2164, 2166, 2168, 2170, 2172, 2174, 2176, 2178, 2180, 2182, 2184, 2186, 2188, 2190, 2192, 2194, 2196, 2198, 2200, 2202, 2204, 2206, 2208, 2210, 2212, 2214, 2216, 2218, 2220, 2222, 2224, 2226, 2228, 2230, 2232, 2234, 2236, 2238, 2240, 2242, 2244, 2246, 2248, 2250, 2252, 2254, 2256, 2258, 2260, 2262, 2264, 2266, 2268, 2270, 2272, 2274, 2276, 2278, 2280, 2282, 2284, 2286, 2288, 2290, 2292, 2294, 2296, 2298, 2300, 2302, 2304, 2306, 2308, 2310, 2312, 2314, 2316, 2318, 2320, 2322, 2324, 2326, 2328, 2330, 2332, 2334, 2336, 2338, 2340, 2342, 2344, 2346, 2348, 2350, 2352, 2354, 2356, 2358, 2360, 2362, 2364, 2366, 2368, 2370, 2372, 2374, 2376, 2378, 2380, 2382, 2384, 2386, 2388, 2390, 2392, 2394, 2396, 2398, 2400, 2402, 2404, 2406, 2408, 2410, 2412, 2414, 2416, 2418, 2420, 2422, 2424, 2426, 2428, 2430, 2432, 2434, 2436, 2438, 2440, 2442, 2444, 2446, 2448, 2450, 2452, 2454, 2456, 2458, 2460, 2462, 2464, 2466, 2468, 2470, 2472, 2474, 2476, 2478, 2480, 2482, 2484, 2486, 2488, 2490, 2492, 2494, 2496, 2498, 2500, 2502, 2504, 2506, 2508, 2510, 2512, 2514, 2516, 2518, 2520, 2522, 2524, 2526, 2528, 2530, 2532, 2534, 2536, 2538, 2540, 2542, 2544, 2546, 2548, 2550, 2552, 2554, 2556, 2558, 2560, 2562, 2564, 2566, 2568, 2570, 2572, 2574, 2576, 2578, 2580, 2582, 2584, 2586, 2588, 2590, 2592, 2594, 2596, 2598, 2600, 2602, 2604, 2606, 2608, 2610, 2612, 2614, 2616, 2618, 2620, 2622, 2624, 2626, 2628, 2630, 2632, 2634, 2636, 2638, 2640, 2642, 2644, 2646, 2648, 2650, 2652, 2654, 2656, 2658, 2660, 2662, 2664, 2666, 2668, 2670, 2672, 2674, 2676, 2678, 2680, 2682, 2684, 2686, 2688, 2690, 2692, 2694, 2696, 2698, 2700, 2702, 2704, 2706, 2708, 2710, 2712, 2714, 2716, 2718, 2720, 2722, 2724, 2726, 2728, 2730, 2732, 2734, 2736, 2738, 2740, 2742, 2744, 2746, 2748, 2750, 2752, 2754, 2756, 2758, 2760, 2762, 2764, 2766, 2768, 2770, 2772, 2774, 2776, 2778, 2780, 2782, 2784, 2786, 2788, 2790, 2792, 2794, 2796, 2798, 2800, 2802, 2804, 2806, 2808, 2810, 2812, 2814, 2816, 2818, 2820, 2822, 2824, 2826, 2828, 2830, 2832, 2834, 2836, 2838, 2840, 2842, 2844, 2846, 2848, 2850, 2852, 2854, 2856, 2858, 2860, 2862, 2864, 2866, 2868, 2870, 2872, 2874, 2876, 2878, 2880, 2882, 2884, 2886, 2888, 2890, 2892, 2894, 2896, 2898, 2900, 2902, 2904, 2906, 2908, 2910, 2912, 2914, 2916, 2918, 2920, 2922, 2924, 2926, 2928, 2930, 2932, 2934, 2936, 2938, 2940, 2942, 2944, 2946, 2948, 2950, 2952, 2954, 2956, 2958, 2960, 2962, 2964, 2966, 2968, 2970, 2972, 2974, 2976, 2978, 2980, 2982, 2984, 2986, 2988, 2990, 2992, 2994, 2996, 2998, 3000, 3002, 3004, 3006, 3008, 3010, 3012, 3014, 3016, 3018, 3020, 3022, 3024, 3026, 3028, 3030, 3032, 3034, 3036, 3038, 3040, 3042, 3044, 3046, 3048, 3050, 3052, 3054, 3056, 3058, 3060, 3062, 3064, 3066, 3068, 3070, 3072, 3074, 3076, 3078, 3080, 3082, 3084, 3086, 3088, 3090, 3092, 3094, 3096, 3098, 3100, 3102, 3104, 3106, 3108, 3110, 3112, 3114, 3116, 3118, 3120, 3122, 3124, 3126, 3128, 3130, 3132, 3134, 3136, 3138, 3140, 3142, 3144, 3146, 3148, 3150, 3152, 3154, 3156, 3158, 3160, 3162, 3164, 3166, 3168, 3170, 3172, 3174, 3176, 3178, 3180, 3182, 3184, 3186, 3188, 3190, 3192, 3194, 3196, 3198, 3200, 3202, 3204, 3206, 3208, 3210, 3212, 3214, 3216, 3218, 3220, 3222, 3224, 3226, 3228, 3230, 3232, 3234, 3236, 3238, 3240, 3242, 3244, 3246, 3248, 3250, 3252, 3254, 3256, 3258, 3260, 3262, 3264, 3266, 3268, 3270, 3272, 3274, 3276, 3278, 3280, 3282, 3284, 3286, 3288, 3290, 3292, 3294, 3296, 3298, 3300, 3302, 3304, 3306, 3308, 3310, 3312, 3314, 3316, 3318, 3320, 3322, 3324, 3326, 3328, 3330, 3332, 3334, 3336, 3338, 3340, 3342, 3344, 3346, 3348, 3350, 3352, 3354, 3356, 3358, 3360, 3362, 3364, 3366, 3368, 3370, 3372, 3374, 3376, 3378, 3380, 3382, 3384, 3386, 3388, 3390, 3392, 3394, 3396, 3398, 3400, 3402, 3404, 3406, 3408, 3410, 3412, 3414, 3416, 3418, 3420, 3422, 3424, 3426, 3428, 3430, 3432, 3434, 3436, 3438, 3440, 3442, 3444, 3446, 3448, 3450, 3452, 3454, 3456, 3458, 3460, 3462, 3464, 3466, 3468, 3470, 3472, 3474, 3476, 3478, 3480, 3482, 3484, 3486, 3488, 3490, 3492, 3494, 3496, 3498, 3500, 3502, 3504, 3506, 3508, 3510, 3512, 3514, 3516, 3518, 3520, 3522, 3524, 3526, 3528, 3530, 3532, 3534, 3536, 3538, 3540, 3542, 3544, 3546, 3548, 3550, 3552, 3554, 3556, 3558, 3560, 3562, 3564, 3566, 3568, 3570, 3572, 3574, 3576, 3578, 3580, 3582, 3584, 3586, 3588, 3590, 3592, 3594, 3596, 3598, 3600, 3602, 3604, 3606, 3608, 3610, 3612, 3614, 3616, 3618, 3620, 3622, 3624, 3626, 3628, 3630, 3632, 3634, 3636, 3638, 3640, 3642, 3644, 3646, 3648, 3650, 3652, 3654, 3656, 3658, 3660, 3662, 3664, 3666, 3668, 3670, 3672, 3674, 3676, 3678, 3680, 3682, 3684, 3686, 3688, 3690, 3692, 3694, 3696, 3698, 3700, 3702, 3704, 3706, 3708, 3710, 3712, 3714, 3716, 3718, 3720, 3722, 3724, 3726, 3728, 3730, 3732, 3734, 3736, 3738, 3740, 3742, 3744, 3746, 3748, 3750, 3752, 3754, 3756, 3758, 3760, 3762, 3764, 3766, 3768, 3770, 3772, 3774, 3776, 3778, 3780, 3782, 3784, 3786, 3788, 3790, 3792, 3794, 3796, 3798, 3800, 3802, 3804, 3806, 3808, 3810, 3812, 3814, 3816, 3818, 3820, 3822, 3824, 3826, 3828, 3830, 3832, 3834, 3836, 3838, 3840, 3842, 3844, 3846, 3848, 3850, 3852, 3854, 3856, 3858, 3860, 3862, 3864, 3866, 3868, 3870, 3872, 3874, 3876, 3878, 3880, 3882, 3884, 3886, 3888, 3890, 3892, 3894, 3896, 3898, 3900, 3902, 3904, 3906, 3908, 3910, 3912, 3914, 3916, 3918, 3920, 3922, 3924, 3926, 3928, 3930, 3932, 3934, 3936, 3938, 3940, 3942, 3944, 3946, 3948, 3950, 3952, 3954, 3956, 3958,



SECTION A

Rev.	Description	Date
A	DA SUBMISSION	02.12.15
B	DA ADDITIONAL INFORMATION	22.04.16
C	DA ADDITIONAL INFORMATION	03.06.16
D	DA ADDITIONAL INFORMATION	08.07.16

DISCLAIMER

THESE DRAWINGS ARE PRELIMINARY DRAWINGS AND ARE SUBJECT TO CHANGE WITHOUT NOTICE DURING THE COURSE OF THE PROPOSED DEVELOPMENT AND IN CONSULTATION WITH COUNCIL. SUBMISSION OF THE DRAWINGS DOES NOT CONSTITUTE A REPRESENTATION OR WARRANTY BY THE DEVELOPER OR ITS SERVANTS, AGENTS OR CONTRACTORS THAT THE DRAWINGS ARE FINAL NOR THAT THE PROPOSED DEVELOPMENT WILL TAKE PLACE IN ACCORDANCE WITH THESE DRAWINGS.

BEFORE CARRYING OUT ANY WORK ENSURE THAT THE DRAWINGS USED CARRY THE LATEST AMENDMENT No.

NOTES:

DRAWINGS MADE TO A LARGER SCALE AND THOSE SHOWING PARTICULAR DETAIL OF WORKS SHALL TAKE PRECEDENCE OVER DRAWINGS MADE TO A SMALLER SCALE AND FOR MORE GENERAL PURPOSES.

WHERE ANY DISCREPANCY EXISTS BETWEEN FIGURED AND SCALED DIMENSIONS, THE FIGURED DIMENSIONS SHALL PREVAIL.

BUILDER TO CHECK ALL SITE DIMENSIONS PRIOR TO FABRICATION OF FITMENTS.

THESE DOCUMENTS AND ANY WORKS EXECUTED AS A RESULT OF THESE DOCUMENTS SHALL BE SUBJECT TO THE COPYRIGHT CONDITIONS SET OUT IN THE CONDITIONS OF ENGAGEMENT.

TONY OWEN PARTNERS
DEVELOPMENT
APPLICATION
DECEMBER 2015

Consultants

Client
McGill Advance Management P/L

Architects
tony owen partners
Level 4, 100-102
Sturges Street, Sydney NSW 2010
P 02 955 5511 F 02 955 5512

Project:
LEWISHAM 3

Project address:
4-12 MCGILL ST
LEWISHAM 2049

Key plan

Scale:
1:200 @ A3

Date:
JUL 2016

Drawing title:
SECTION A

Project no. 947 Dwg #. A300

Drawn: DC Rev. D

Drawing status:
DEVELOPMENT APPLICATION

DISCLAIMER

THESE DRAWINGS ARE PRELIMINARY DRAWINGS AND ARE SUBJECT TO CHANGE WITHOUT NOTICE DURING THE CONSTRUCTION OF THE PROJECT. THE DEVELOPER AND IN CONSULTATION WITH COUNCIL, SUBMISSION OF THE DRAWINGS DOES NOT CONSTITUTE A COMPLETION OF OR WARRANTY BY THE DEVELOPER OR ITS SERVANTS, AGENTS OR CONTRACTORS THAT THE DRAWINGS ARE FINAL, NOR THAT THE PROPOSED DEVELOPMENT WILL TAKE PLACE IN ACCORDANCE WITH THESE DRAWINGS.

BEFORE CARRYING OUT ANY WORK ENSURE THAT THE DRAWINGS USED CARRY THE LATEST AMENDMENT NO.

NOTES:

DRAWINGS MADE TO A LARGER SCALE AND THOSE SHOWING PARTICULAR DETAIL OF WORKS SHALL TAKE PRECEDENCE OVER DRAWINGS MADE TO A SMALLER SCALE FOR MORE GENERAL PURPOSES.

WHERE ANY DISCREPANCY EXISTS BETWEEN FIGURED AND UNFIGURED DIMENSIONS, THE FIGURED DIMENSIONS SHALL PREVAIL.

BUILDER TO CHECK ALL SITE DIMENSIONS PRIOR TO FABRICATION OF FITTINGS

THESE DOCUMENTS AND ANY WORKS EXECUTED AS A RESULT OF THESE DOCUMENTS SHALL BE SUBJECT TO THE FOLLOWING CONDITIONS SET OUT IN THE CONDITIONS OF ENGAGEMENT.

Consultants

Architects
**TONY
 OWEN**
OTRS

Level 2,
 12-16 Queen St
 Opposite HM
 P 412 400 200
 F 412 400 375
 E info@otrs.com

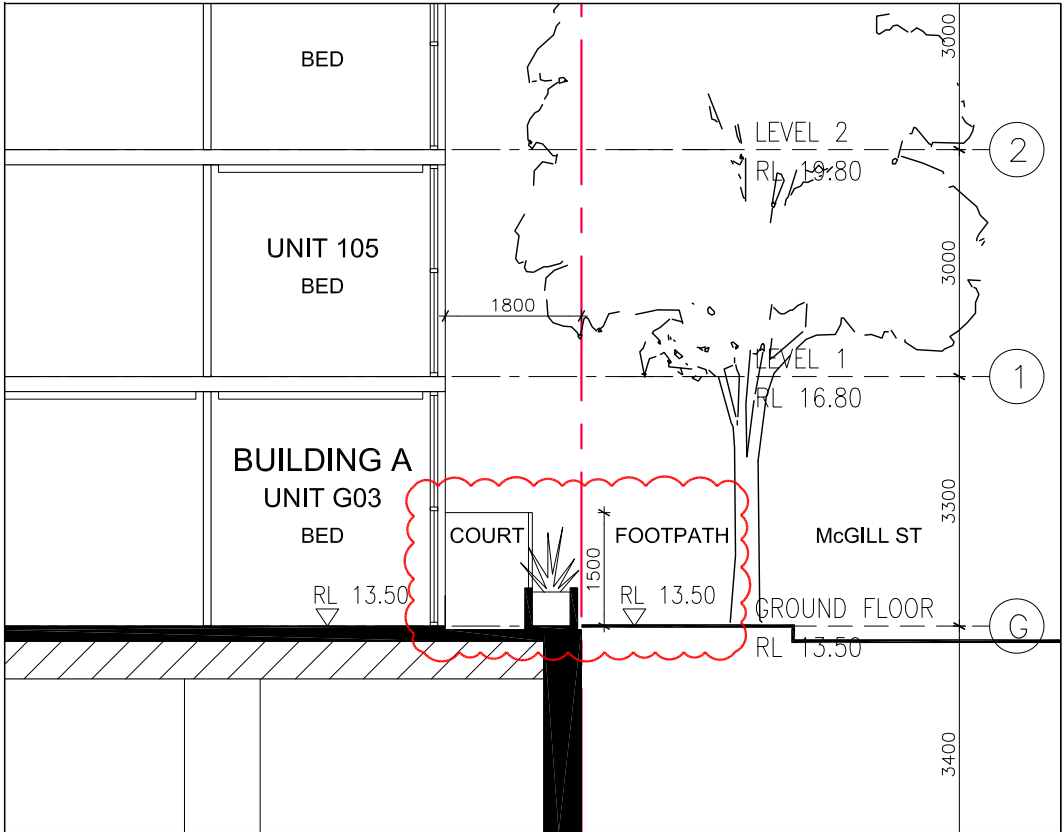
Project address:
4-12 MCGILL ST
LEWISHAM 2049

Drawing title:
SECTION B

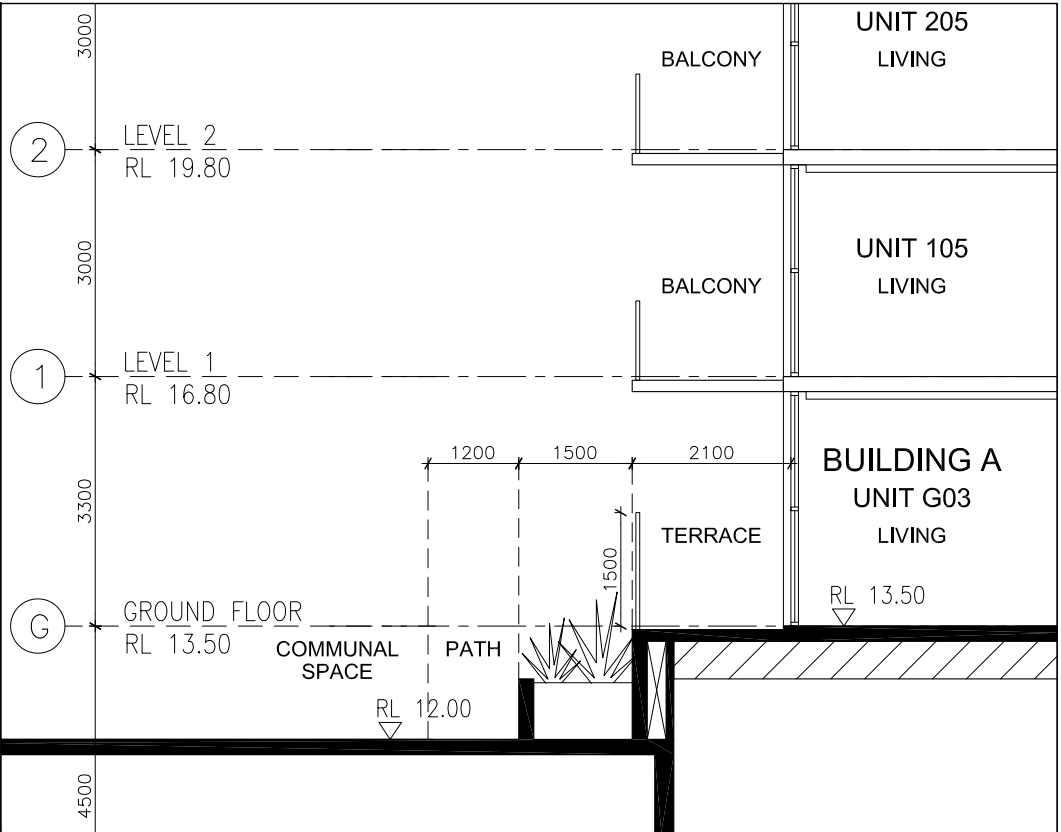
Drawn: DC | Rev. D

Drawing status:
DEVELOPMENT APPLICATION

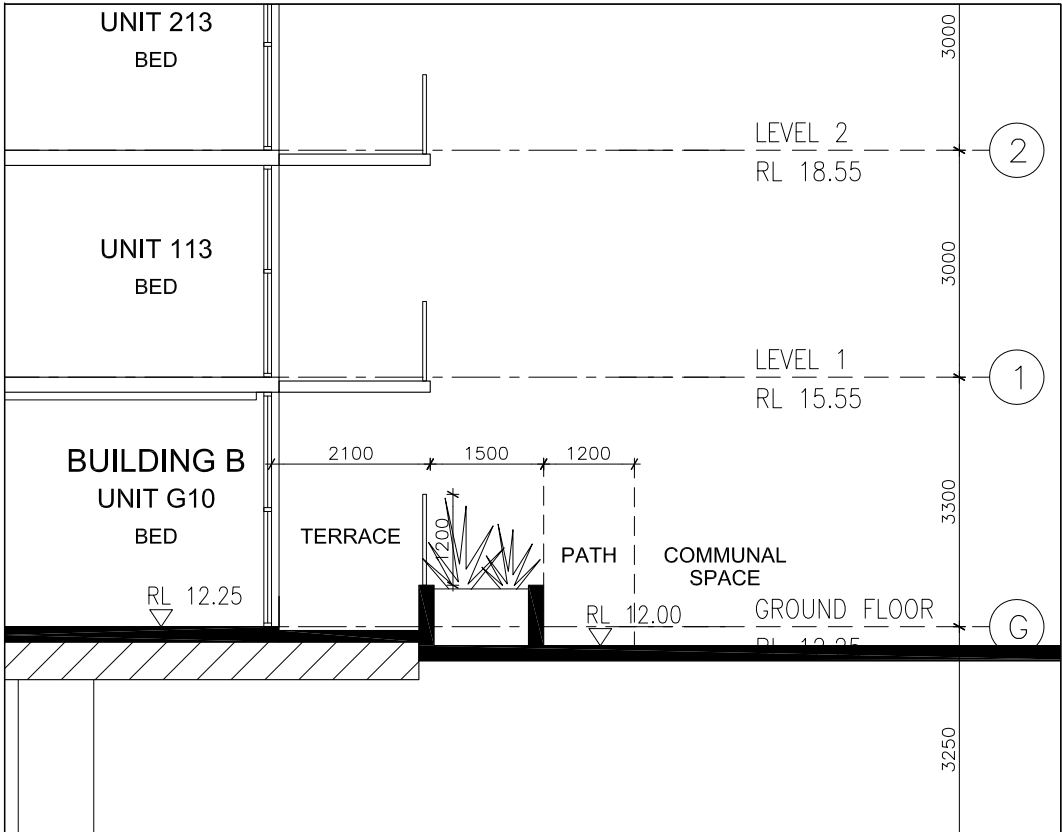




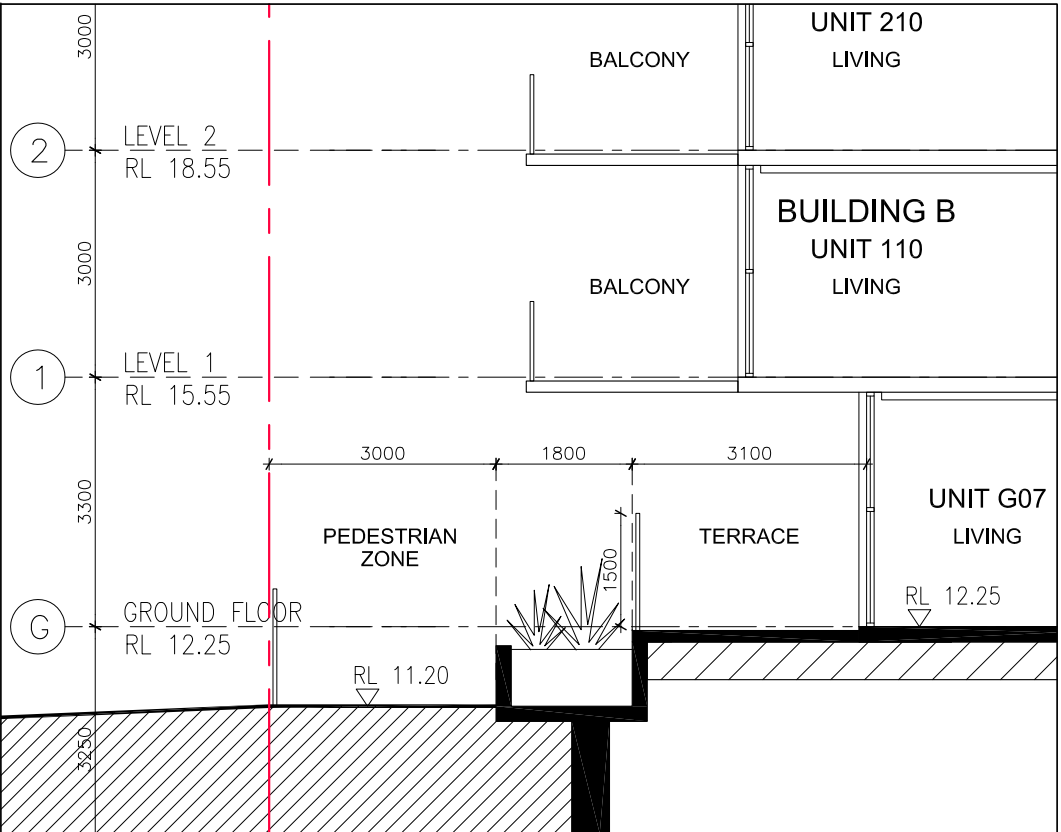
UNIT G03 - MCGILL STREET FRONTAGE 1:100 @ A3



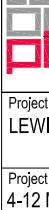

UNIT G03 - COMMUNAL SPACE SECTION 1:100 @ A3



UNIT G10 - COMMUNAL SPACE SECTION 1:100 @ A3

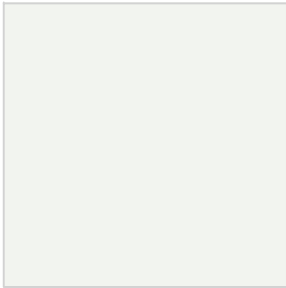


UNIT G07 - PEDESTRIAN ZONE SECTION 1:100 @ A3

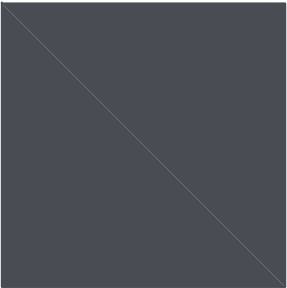
Rev.	Description	Date
A	DA SUBMISSION	02.12.15
B	DA ADDITIONAL INFORMATION	22.04.16
C	DA ADDITIONAL INFORMATION	03.06.16
D	DA ADDITIONAL INFORMATION	08.07.16
DISCLAIMER		
THESE DRAWINGS ARE PRELIMINARY DRAWINGS AND ARE SUBJECT TO CHANGE WITHOUT NOTICE DURING THE COURSE OF THE PROPOSED DEVELOPMENT AND IN CONSULTATION WITH COUNCIL. SUBMISSION OF THE DRAWINGS DOES NOT CONSTITUTE A REPRESENTATION OR WARRANTY BY THE DEVELOPER OR ITS SERVANTS, AGENTS OR CONTRACTORS THAT THE DRAWINGS ARE FINAL NOR THAT THE PROPOSED DEVELOPMENT WILL TAKE PLACE IN ACCORDANCE WITH THESE DRAWINGS.		
BEFORE CARRYING OUT ANY WORK ENSURE THAT THE DRAWINGS USED CARRY THE LATEST AMENDMENT No.		
NOTES:		
DRAWINGS MADE TO A LARGER SCALE AND THOSE SHOWING PARTICULAR DETAIL OF WORKS SHALL TAKE PRECEDENCE OVER DRAWINGS MADE TO A SMALLER SCALE AND FOR MORE GENERAL PURPOSES		
WHERE ANY DISCREPANCY EXISTS BETWEEN FIGURED AND SCALED DIMENSIONS, THE FIGURED DIMENSIONS SHALL PREVAIL.		
BUILDER TO CHECK ALL SITE DIMENSIONS PRIOR TO FABRICATION OF FITMENTS		
THESE DOCUMENTS AND ANY WORKS EXECUTED AS A RESULT OF THESE DOCUMENTS SHALL BE SUBJECT TO THE COPYRIGHT CONDITIONS SET OUT IN THE CONDITIONS OF ENGAGEMENT.		
[TONY OWEN PARTNERS DEVELOPMENT APPLICATION DECEMBER 2015]		
Consultants		
Client McGill Advance Management P/L		
Architects 		
Project: LEWISHAM 3		
Project address: 4-12 MCGILL ST LEWISHAM 2049		
Key plan 		
Scale: 1:100 @ A3	Date: JUL 2016	
Drawing title: PUBLIC & PRIVATE INTERFACE		
Project no. 947	Dwg #. A360	
Drawn: DC	Rev. D	
Drawing status: DEVELOPMENT APPLICATION		

EXTERNAL MATERIAL FINISHES

- 1 RENDERED AND PAINTED MASONRY / CONCRETE WALL - DULUX COLOUR NATURAL WHITE
- 2 RENDERED AND PAINTED MASONRY / CONCRETE WALL - DULUX COLOUR PLATINUM CLASS
- 3 POWDER COATED ALUMINUM FRAMED SCREEN WITH PERFORATED MESH INFILL - DULUX COLOUR LEXICON WHITE
- 4 POWDER COATED ALUMINUM FRAMED SCREEN WITH PERFORATED MESH INFILL - DULUX COLOUR TICKING
- 5 POWDER COATED ALUMINUM FRAMED SCREEN WITH PERFORATED MESH INFILL - DULUX COLOUR INDIAN REED
- 6 POWDER COATED ALUMINUM FRAMED SCREEN WITH PERFORATED MESH INFILL - DULUX COLOUR INDIAN REED
- 7 POWDER COATED ALUMINUM FRAMED SCREEN WITH PERFORATED MESH INFILL - DULUX COLOUR SUNBOUND
- 8 POWDER COATED ALUMINUM FRAMED SCREEN WITH PERFORATED MESH INFILL - DULUX COLOUR TIDAL WAVE
- 9 POWDER COATED ALUMINUM WINDOW FRAME - DULUX COLOUR TICKING
- 10 ALUMINUM FRAMED GLAZING - CLEAR
- 11 ALUMINUM FRAMED GLASS BALUSTRADE
- 12 ALUMINUM METAL PANEL CLADDING - POWDER COAT DULUX METALLICA SILVER OR SIMILAR
- 13 ALUMINUM METAL PANEL CLADDING - ALUCOBOND LEMON
- 14 HORIZONTAL METAL LOUVRE



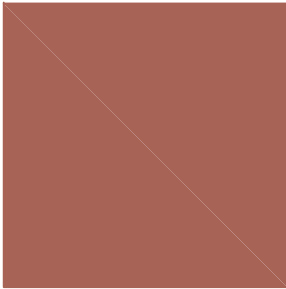
3. DULUX LEXICON WHITE



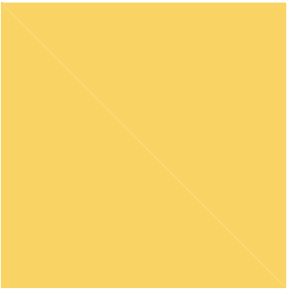
4. DULUX TICKING



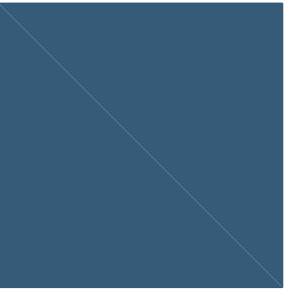
5. DULUX INDIAN REED



6. DULUX INDIAN REED



7. DULUX SUNBOUND



8. DULUX TIDAL WAVE



12. DULUX METALLICA SILVER



13. ALUCOBOND LEMON



PERSPECTIVE FROM MCGILL STREET



PERSPECTIVE FROM LEWISHAM WEST LIGHT RAIL STATION

Rev.	Description	Date
A	DA SUBMISSION	02.12.15
B	DA ADDITIONAL INFORMATION	22.04.16
C	DA ADDITIONAL INFORMATION	03.06.16
D	DA ADDITIONAL INFORMATION	08.07.16
DISCLAIMER		
THESE DRAWINGS ARE PRELIMINARY DRAWINGS AND ARE SUBJECT TO CHANGE WITHOUT NOTICE DURING THE COURSE OF THE PROPOSED DEVELOPMENT AND IN CONSULTATION WITH COUNCIL. SUBMISSION OF THE DRAWINGS DOES NOT CONSTITUTE A REPRESENTATION OR WARRANTY BY THE DEVELOPER OR ITS SERVANTS, AGENTS OR CONTRACTORS THAT THE DRAWINGS ARE FINAL NOR THAT THE PROPOSED DEVELOPMENT WILL TAKE PLACE IN ACCORDANCE WITH THESE DRAWINGS.		
BEFORE CARRYING OUT ANY WORK ENSURE THAT THE DRAWINGS USED CARRY THE LATEST AMENDMENT No.		
NOTES:		
DRAWINGS MADE TO A LARGER SCALE AND THOSE SHOWING PARTICULAR DETAIL OF WORKS SHALL TAKE PRECEDENCE OVER DRAWINGS MADE TO A SMALLER SCALE AND FOR MORE GENERAL PURPOSES.		
WHERE ANY DISCREPANCY EXISTS BETWEEN FIGURED AND SCALED DIMENSIONS, THE FIGURED DIMENSIONS SHALL PREVAIL.		
BUILDER TO CHECK ALL SITE DIMENSIONS PRIOR TO FABRICATION OF FITMENTS.		
THESE DOCUMENTS AND ANY WORKS EXECUTED AS A RESULT OF THESE DOCUMENTS SHALL BE SUBJECT TO THE COPYRIGHT CONDITIONS SET OUT IN THE CONDITIONS OF ENGAGEMENT.		
[TONY OWEN PARTNERS DEVELOPMENT APPLICATION DECEMBER 2015]		
Consultants		
Client		
McGill Advance Management P/L		
Architects		
tony owen partners Level 2, 100-102 Dandenong Road, Sth Melbourne VIC 3181 P 03 9594 5511 F 03 9594 5512 E info@tonyowenpartners.com.au		
Project:		
LEWISHAM 3		
Project address:		
4-12 MCGILL ST LEWISHAM 2049		
Key plan		
Scale:	Date:	
	JUL 2016	
Drawing title:		
EXTERNAL MATERIAL FINISHES		
Project no. 947	Dwg #. A700	
Drawn: DC	Rev. D	
Drawing status:		
DEVELOPMENT APPLICATION		